

# POREC 2022



01-03

JULY

*Karate 1 – Youth League*

POREČ 2022

## CONTENTS

<b>1. WELCOME MESSAGE .....</b>	<b>3</b>
<b>1.1 Greeting from the Head of the host NF .....</b>	<b>3</b>
Davor Cipek, .....	3
President of the Croatian Karate Union .....	3
President of the Organizing Committee .....	3
<b>2. INTRODUCTION .....</b>	<b>4</b>
<b>3. INTRODUCTION KARATE 1- YOUTH LEAGUE POREC 2022.....</b>	<b>4</b>
<b>4. COMPETITION INFORMATION .....</b>	<b>4</b>
<b>4.1 Categories .....</b>	<b>4</b>
4.1.1 Age .....	5
<b>4.2 Prizes .....</b>	<b>5</b>
<b>5. CONTACTS INFORMATION .....</b>	<b>5</b>
<b>5.1 Organizers contact details .....</b>	<b>5</b>
<b>5.2 Local Organising Committee contact details.....</b>	<b>5</b>
<b>5.3 WKF Event Supervisor contact.....</b>	<b>5</b>
<b>5.4 Covid Team contact .....</b>	<b>6</b>
<b>5.5 Safe Sport contact.....</b>	<b>6</b>
<b>6. WKF APPROVED PROTECTIONS, KARATEGIS &amp; TATAMIS .....</b>	<b>6</b>
<b>7. EVENTS SCHEDULE.....</b>	<b>9</b>
<b>8. RANKING .....</b>	<b>10</b>
<b>9. ONLINE REGISTRATION &amp; OFFICIAL ACCREDITATION .....</b>	<b>11</b>
<b>9.1 Online Registration Process .....</b>	<b>11</b>
<b>9.2 Entry Fee .....</b>	<b>11</b>
<b>9.3 Payment.....</b>	<b>12</b>
<b>9.4 Official Accreditation .....</b>	<b>12</b>
<b>10. WKF COACH PROGRAMME .....</b>	<b>13</b>
<b>10.1 WKF Accredited Coach, Poreč 2022 .....</b>	<b>13</b>
10.1.1 Schedule .....	13
10.1.2 Online Registration .....	13
10.1.3 Fees .....	13
10.1.4 Payment.....	13

11.	MEDIA .....	14
11.1	Press .....	14
12.	COMPETITION VENUE .....	14
13.	TICKET FOR SPECTATORS .....	14
14.	OFFICIAL HOTELS .....	15
14.1	HQ Hotel .....	15
14.2	Official hotels .....	15
14.3	Hotels Prices .....	18
14.4	Transport Services .....	19
14.5	Meals at the Venue .....	20
15.	WKF COVID PROTOCOL .....	21
16.	REQUIRED DOCUMENTS .....	21
16.1	Restrictions on entering to CROATIA .....	22
17.	VISA REQUIREMENTS .....	22
18.	CITY / COUNTRY INFORMATION .....	23
18.1	About Poreč .....	23
18.2	How to get to Poreč .....	24
18.3	Practical Information .....	25
18.4	Side Events .....	26
19.	MISCELLANEOUS .....	26
20.	OMISSIONS .....	26

## 1. WELCOME MESSAGE

### 1.1 Greeting from the Head of the host NF

Dear Friends,

It is my great pleasure and honor to welcome you on behalf of the Croatian Karate Union and the Organizing Committee to the Youth League Porec 2022.

July keeps being my favorite time of the year, and I am looking forward to it once again, knowing we will start it with a spectacular WKF Karate1 Youth League tournament.



Despite the pandemic situation the world has been in, we managed to deliver a great event last year in a new location - Porec. My hopes are high that this year we will organize the event we have been hoping for two years and that we will break the records of the number of competitors and, at the same time, raise the standard of tournament quality.

I am happy to see that the careers of young athletes develop and that you achieve significant successes at the Youth League in Poreč. I sincerely hope that 2022 will be a year that you will remember dearly for your sporting triumphs.

Davor Cipek,

President of the Croatian Karate Union

President of the Organizing Committee

## 2. INTRODUCTION

The Karate 1 – Youth League is a competition conceived to highlight the impact of Karate in young ages.

Established under the umbrella of Karate 1 and designed to complete Karate 1-Premier League and Karate 1-Series A, the Karate 1-Youth League aims at becoming a platform for the development of youngsters in their quest to progress in the sport.

The competition was devised to respond to the increasing interest of young competitors to have more options to compete at the highest level and it puts the focus on karatekas aged 12 to 17.

The number of competitors is limited to a maximum of 96 athletes per category. All members of WKF are admitted to participate.

The WKF [competition Rules](#) in force will be applied.

## 3. INTRODUCTION KARATE 1- YOUTH LEAGUE POREC 2022

The Karate 1 – Youth League Porec 2022 will be held next July 1-3 in Porec, Croatia.

## 4. COMPETITION INFORMATION

### 4.1 Categories

- Junior (16 - 17 years old): 11 categories (9 Kumite + 2 Kata)
- Female Kumite: - 48kg, - 53kg, - 59kg, +59kg
- Male Kumite: - 55kg, - 61kg, - 68kg, - 76kg, +76kg
- Kata: Female, Male

Cadet (14 - 15 years old): 10 categories (8 Kumite + 2 Kata)

- Female Kumite: - 47kg, - 54kg, +54kg
- Male Kumite: - 52kg, - 57kg, - 63kg, - 70kg, +70kg
- Kata: Female, Male

Under 14 (12 - 13): 10 categories (8 Kumite + 2 Kata)

- Female Kumite: - 42kg, - 47kg, +47kg
- Male Kumite: - 40kg, - 45kg, - 50kg, - 55kg, +55kg
- Kata: Female, Male

## 4.2 Age

### IMPORTANT NOTE

The age limit of competitors for the corresponding category will be the first day of the entire event.

## 4.3 Prizes

The event prizes (medals and trophies) are to be provided by the host.

In each individual category, the first prize will be a gold medal.

The second prize will be a silver medal.

The third prizes will be bronze medals.

## 5. CONTACTS INFORMATION

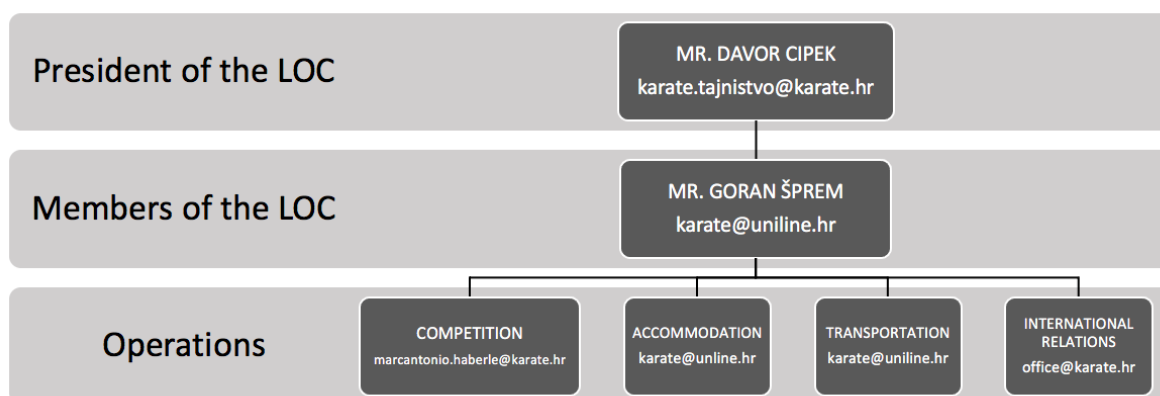
### 5.1 Organizers contact details

Croatian Karate Union

Address: Trg Krešimira Čosića 11, 10000 Zagreb CROATIA

E-mail address: [office@karate.hr](mailto:office@karate.hr)

### 5.2 Local Organising Committee contact details



### 5.3 WKF Event Supervisor contact

The WKF Event Supervisor for this Youth League event is Mr. Luca Valdesi. His contact details are as follows:

Email: [lucavaldesi76@hotmail.com](mailto:lucavaldesi76@hotmail.com)



## 5.4 Covid Team contact

Michael Wenner (mail: [mwenner@wkf.net](mailto:mwenner@wkf.net))

## 5.5 Safe Sport contact

WKF events must be safe for all athletes and participants and entirely free from any form of non-accidental violence, namely, harassment and abuse. Any such behaviour will not be tolerated.

If you or someone you know has been the victim of abuse or harassment in Karate, get help and report it.

Your first point of contact for any incident at this event is the WKF Event Supervisor, whose contact information you can find detailed above.

Otherwise, any other incident can be reported via the [WKF Official Complaint Form](#) and sent to: [safekarate@wkf.net](mailto:safekarate@wkf.net)

## 6. WKF APPROVED PROTECTIONS, KARATEGIS & TATAMIS

The Karate 1-Youth League complies with the highest level of presentation. In order to guarantee the correct delivery of the event, and to ensure the suitable quality of the tournament, exclusively the following brands are WKF Approved for use in the 2022 Karate 1-Youth League Season.

### SPORT PROTECTIONS “WKF Approved”



\*Click on the logos

WKF Facemask and Chest Protector for those under 14 years of age are used according to Appendix 10 of the WKF Regulations in force:

<https://wkf.net/karateprotections/protections/face-mask>

<https://wkf.net/karateprotections/protections/children-chest-protector>



**ALL “WKF APPROVED” KARATEGIS  
ARE ALLOWED TO PARTICIPATE IN THIS COMPETITION.**

(INCLUDING KARATEGIS WITH THE BRAND EMBROIDED  
IN RED OR BLUE ON THE SHOULDERS)

Click on the picture to see all the “WKF approved” Karate-Gis.





## DISTRIBUTORS ASSISTANCE “WKF Approved”

Click on the image to visit the distributors by countries.



## TATAMIS “WKF Approved”

**ishii**

**PROGNOME**  
TATAMI BY TROCELLEN

**TaiShan**

**TatamiX**<sup>®</sup>

**WESING** 九日山

\*Click on the logos

## 7. EVENTS SCHEDULE

**DUE TO THE CURRENT EMERGENCY HEALTH SITUATION THIS EVENT WILL BE HELD UNDER THE WKF COVID-19 PROTOCOL;**

[https://www.wkf.net/pdf/WKF\\_COVID\\_protocol.pdf](https://www.wkf.net/pdf/WKF_COVID_protocol.pdf)

*“According to the health authorities of Porec, relating to the anti-Covid-19 pandemic regulations, given the mandatory tracking of Sports Subjects, all participants MUST STAY IN THE OFFICIAL HOTELS referred to in the list attached to this bulletin.*

*It is emphasized that the prices offered are largely in line with the market average.*

*Registration will not be accepted for those who fail to comply with this requirement”*

In order to respect and properly follow the WKF Covid-19 protocol, **the schedules below will be strictly followed.**

THURSDAY 30/06 2022	ACTIVITY	PLACE
10:00-18:00	Registration and Weigh-In	TBD
15:00-16:30	Referee Meeting	TBD
17:00-18:30	Accredited Coach Briefing	TBD
19:00-20:00	Coaching Meeting & Draws	TBD
18:00-19:00	Registration Referee	TBD
19:30-20:30	Referee Briefing	TBD

The exact location will be announced in the upcoming dates and any changes will be updated.

## COMPETITION PROGRAMME

Venue	
<b>Friday, 01/07 09:00-20:00</b>	<u>Eliminations &amp; Repechages U14</u> Kata Individual Male/Female Kumite Individual, Male (-40, -45, -50, -55, +55 Kg) Kumite Individual, Female (-42, -47, +47 Kg) <u>Finals U14</u>
<b>Saturday, 02/07 09:00-20:00</b>	<u>Eliminations &amp; Repechages Cadet</u> Kata Individual Male/Female Kumite Individual, Male (- 52kg, - 57kg, - 63kg, - 70kg, +70kg) Kumite Individual, Female (- 47kg, - 54kg, +54kg) <u>Finals Cadet</u>
<b>Sunday, 03/07 09:00-20:00</b>	<u>Eliminations &amp; Repechages Junior</u> Kata Individual Male/Female Kumite Individual, Male (- 55kg, - 61kg, - 68kg, - 76kg, +76kg) Kumite Individual, Female (- 48kg, - 53kg, - 59kg, +59kg) <u>Finals Junior</u>

The detailed competition schedule will be fixed after closing the online registration in order to adequate it to the final number of athletes.

In case of number of registrations exceeding the limits, the organization reserves the right to anticipate the categories (or part of category) 1 day earlier (ex: some categories Juniors could start the Thursday, some Cadet the friday and some U14 the saturday)

## 8. RANKING

Competitors can earn ranking points in every Karate 1 event according to the official WKF Ranking Criteria, point 3.2 of the WKF World Ranking Rules;

[https://www.wkf.net/pdf/wkf\\_worldranking\\_rules.pdf](https://www.wkf.net/pdf/wkf_worldranking_rules.pdf)

The applicable ranking will be the one updated on the day of the registration opening.

U-14 category does not earn ranking points.

## 9. ONLINE REGISTRATION & OFFICIAL ACCREDITATION

All registration in a Youth League event must be processed ONLINE. Onsite registrations will NOT be accepted.

The registration will be validated once completed the online payment through the payment platform.

### 9.1 Online Registration Process

The registration starts three (3) months prior to the event, on April, 01<sup>st</sup> 2022 and close fifteen (15) days before the tournament, on 16<sup>th</sup> June, 2022 at 12:00 hrs GMT +0 and it is divided in the following three phases (all phases will close at the 12:00 hrs GMT +0 of the listed day);

- **Phase 1, from 01/04/2022 to 14/04/2022:** Registration only by National Federations. Maximum, 1 athlete per category.
- **Phase 2, from 15/04/2022 to 16/06/2022:** Open registration.

All **competitor** registrations must be made **online** through the following Sportdata link;

<https://www.sportdata.org/wkf/set.php?id=578>

All **referee** registrations must be made **online** through the following Sportdata link;

<https://www.sportdata.org/wkf/set.php?id=635>

All coach registrations must be made online through the following Sportdata link;

<https://www.sportdata.org/wkf/set.php?id=634>

Clubs and National Federations are responsible for the quality of the entered registration data. Once close the online registration, any comments will have to notified to both, the software team and the WKF, at latest five days before the first day of competition.

### Technical Support for Online Registration

In case of any questions concerning the online registration please directly contact the Sportdata software team via the email address; [karate1@sportdata.org](mailto:karate1@sportdata.org) or [office@sportdata.org](mailto:office@sportdata.org)

### 9.2 Entry Fee

The entry fees are (per individual category entry): 50€/ 1<sup>st</sup> month- 60€/ next 45 days- 75€ last 15 days.

### 9.3 Payment

All payments must be processed through the ONLINE PAYMENT PLATFORM. Onsite payments will NOT be accepted.

### 9.4 Official Accreditation

The official accreditation will take place on Thursday, 30/06/2022, from 10.00 a.m. to 16.00 p.m. at the (Place TBD).

#### **Weigh in must be done on 30/06 for all competitors in kumite categories.**

If changes are required during the official registration session, because of incorrect or missing registration data, a fee of € 20 is charged for each change.

At registration, accreditation cards will be issued with the participants main data, a photograph and information about registered categories. The accreditation card must be always worn during the event.

Only members of national federations recognized by WKF are admitted to participate, as per Youth League Organising Rules 2020 (PL OR Point 6 Registration).

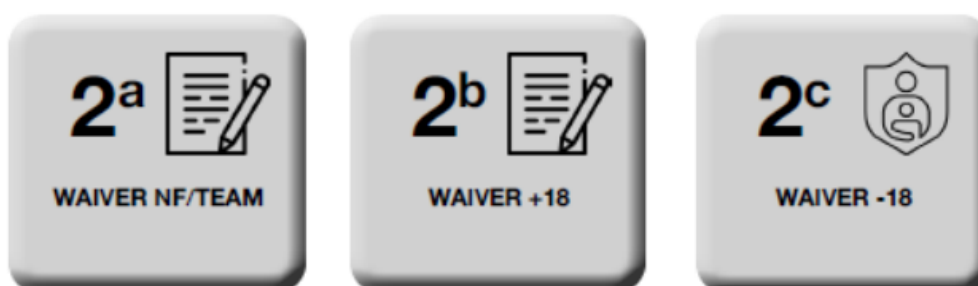
**All participants must submit an official document (passport or other valid ID card) for the WKF identification and validation at the accreditation session.**

**The accreditation of any competitor must be done by the athlete or the athlete's coach, in person bringing the athlete passport or other valid ID at the accreditation session.**

**The competitor who has not collected, either personally or through his/her coach the accreditation during the official registration, will not be included in the draw.**

**The weighing will be carried out immediately after receiving the accreditation, those athletes who will not attend the weighing will not be included in the draw.**

#### **MANDATORY DOCUMENTS TO BE SUBMITTED AT THE OFFICIAL ACCREDITATION**



## 10. WKF COACH PROGRAMME

According to the WKF Coach Educational Programme, **the minimum certification required to take part in Karate 1 – Youth League events is the “Accredited Coach” (level 1).** To obtain such certification, coaches must attend the corresponding **briefing**.

The Accredited Coach licence can be obtained;

- through the [WKF E-learning platform for Coaches](#).
- or by attending to one of the Programmes for Coaches that the WKF will hold in official events.

A WKF Programme for Coaches (Level 1) will be held in all Karate 1 - Youth League events 2022.

### 10.1 WKF Accredited Coach, Poreč 2022

Please find below the Coach schedule and the details for the registration process:

#### 10.1.1 Schedule

Accredited Coach Briefing				
Thursday	Date 30/06	from 17:00	to 18:30	Place TBD

#### 10.1.2 Online Registration

Those coaches who wish to attend to the “WKF Accredited Coach Briefing” in Poreč must be registered online with deadline **April 01<sup>st</sup>, 2022** through the following link;

[https://www.sportdata.org/wkf/set-online/veranstaltung\\_info\\_main.php?active\\_menu=calendar&vernrr=637#a\\_eventhead](https://www.sportdata.org/wkf/set-online/veranstaltung_info_main.php?active_menu=calendar&vernrr=637#a_eventhead)

Should you have any difficulties when registering, please contact [support@sportsid.org](mailto:support@sportsid.org) for technical support.

#### 10.1.3 Fees

We would like to remind you that the fees for the Program for WKF Coaches are as follows:

Briefing for “Accredited Coach” level (new application or license renewal)  
**300 CHF**

#### 10.1.4 Payment

All payments must be made through Sportdata platform.

No other methods of payment will be accepted.

Registrations and payments onsite will not be accepted.



## 11. MEDIA

### 11.1 Press

Press accreditation can only be given to professional journalists working for a media and having proof of their credentials.

Media professionals can register to request press accreditations through the online registration form which can be found here:

<https://www.sportdata.org/wkf/set.php?id=578>

**Video recording will not be allowed**

**All accredited press shall follow the WKF Covid 19 Protocol (section 15) which includes presenting the Original Negative PCR nasopharyngeal test, Certificate of Vaccination or a Covid 19 Recover Official Certificate, as well as the WKF Health Questionnaire (section 16). Moreover, all press will be required to wear a certified face mask (FFP2 or similar) at all times and will be compelled to follow the local sanitary measures and WKF COVID-19 Protocol.**

Should you need more information about press or media related issues, please directly contact the World Karate Federation's office: [press@wkf.net](mailto:press@wkf.net)

All press will need to follow the WKF Protocol and hand in printed version of the required documents (section 15 and 16)

## 12. COMPETITION VENUE

ŽATIKA SPORTS CENTRE, address: Vukovarska ulica 3, 52440 Poreč CROATIA

**Trocellen**  
**[OFFICIAL TATAMI FOR THIS TOURNAMENT](#)**

## 13. TICKET FOR SPECTATORS

The ticket categories and prices are:

Due to the unpredictable circumstances regarding COVID-19 and countermeasures that will be in force during June and July, the LOC will publish the possibilities of open entrance for spectators and ticketing in the next bulletin.

## 14. OFFICIAL HOTEL

In order to provide all participants with the best covid safety and traceability conditions, accommodation shall be booked only in official hotels.

### 14.1 HQ Hotel

PARENTIUM \*\*\*\*\*

Address: Zelena laguna 6, 52440, Poreč

Distance to the sports venue: 4,1km / 6 minutes by car



### 14.2 Official hotels

HOTEL MOLINDRIO \*\*\*\*

Address: Zelena laguna 2, 52440, Poreč

Distance to the sports venue: 3,5 km / 5 minutes by car



HOTEL ALBATROS\*\*\*

Address: Zelena laguna 20, 52440, Poreč

Distance to the sports venue: 3,9 km / 6 minutes by car



### HOTEL PLAVI\*\*\*

Address: Zelena laguna 10, 52440, Poreč

Distance to the sports venue: 3,9 km / 6 minutes by car



### HOTEL ISTRA\*\*\*

Address: Zelena laguna 12, 52440, Poreč

Distance to the sports venue: 3,7 km / 5 minutes by car



### HOTEL GRAN VISTA\*\*\*

Address: Zelena laguna 13, 52440, Poreč

Distance to the sports venue: 4 km / 6 minutes by car





## HOTEL DELFIN\*\*

Address: Zelena laguna 27, 52440, Poreč

Distance to the sports venue: 4,3 km / 6 minutes by car



## APARTMENTS BELLEVUE\*\*\*\*

Address: Plava laguna 10, 52440, Poreč

Distance to the sports venue: 2,7 km / 4 minutes by car



## 14.3 Hotels Prices

### PRICES IN EUR PER PERSON PER NIGHT

HOTEL NAME	MEAL	SINGLE	DOUBLE	TRIPLE
PARENTIUM - HQ HOTEL ****	With Breakfast	250	125	-
	Half Board	260	135	-
	Full Board	275	150	-
MOLINDRIO ****	With Breakfast	141	94	85
	Half Board	151	104	94
	Full Board	166	119	108
ALBATROS ****	All Inclusive	177	118	107
HOTEL *** (Plavi / Istra / Gran Vista)	With Breakfast	111	74	67
	Half Board	121	84	76
	Full Board	136	99	90
DELFIN **	With Breakfast	83	55	-
	Half Board	93	65	-
	Full Board	108	80	-
APARTMENT NAME	MEAL	APP 2/3/4 BASIC		
APARTMENTS BELLEVUE ****	With Breakfast	66		
	Half Board	76		
	Full Board	91		

*\*Rates (in EUR) are per person and night, inclusive of VAT and tourist city tax.*

*\*\* Guests booking the HOTEL \*\*\* will be allocated at either of the hotels listed above (Plavi / Istra / Gran Vista). The allocation will be based upon availability. Guests will be informed of their allocated hotel no later than 24 hours before check in.*

*The listed rates are valid for bookings until May 02nd. For all bookings made after that date, the rates will increase by 10%.*

*Check in: 14:00 | Check out: 10:00*

*Pets are not allowed in the official hotels nor in the apartment complex.*

## Reservation & Payment Policy:

In accordance with the Covid-19 regulations, all accredited participants must stay in the Official Hotels and make their reservations through the official travel agency Uniline d.o.o.

Reservations by email: [karate@uniline.hr](mailto:karate@uniline.hr)

In order to secure the reservation, at least 50% of the total amount has to be paid within 24 hours of making the reservation and receiving a confirmation of availability from Uniline operators. The rest of the payment has to be done until May 25th.

After the bank transfer is done, a guest needs to send a proof (confirmation) of payment received from the bank to the email address: [karate@uniline.hr](mailto:karate@uniline.hr) Otherwise, Uniline will not be obligated to carry out the services.

Please bear in mind that accommodation capacity is limited, and the reservations will be confirmed on a first come, first served basis. The organization reserves the right not to accept further reservations once the limit is reached. To ensure the best possible accommodation for all athletes, please make your reservations as soon as possible.

## Cancellation Policy:

Untill May 31st: 50% of penalties

After June 1st: 100% of penalties

## 14.4 Transport Services

Uniline Travel Agency will also provide transportation services from and to the airport, including different cities in Croatia, Italy, and Slovenia. Please find below a table with the official pick up points, distances and transfer prices. Kindly note that all indicated prices refer to one way transport only.

Reservations by email: [karate@uniline.hr](mailto:karate@uniline.hr)



One way transfer rates Airport – Porec / Porec – Airport	One way distance	Car up to 3 seats	Minivan up to 7 seats	Minibus up to 15 seats	Bus up to 49 seats
<b>Pula</b>	65 km	65,00 €	85,00 €	305,00 €	365,00 €
<b>Trieste</b>	127 km	160,00 €	190,00 €	330,00 €	470,00 €
<b>Ljubljana</b>	185 km	250,00 €	290,00 €	520,00 €	710,00 €
<b>Venezia / Treviso</b>	235 km	280,00 €	335,00 €	555,00 €	745,00 €
<b>Zagreb</b>	280 km	340,00 €	405,00 €	910,00 €	1.050,00 €

Reservations by email: [karate@uniline.hr](mailto:karate@uniline.hr)

In order to secure the reservation, at least 50% of the total amount has to be paid within 24 hours of making the reservation and receiving a confirmation of availability from Uniline operators. The rest of the payment has to be done until May 25th.

After the bank transfer is done, a guest needs to send a proof (confirmation) of payment received from the bank to the email address: [karate@uniline.hr](mailto:karate@uniline.hr) Otherwise, Uniline will not be obligated to carry out the services.

#### Cancellation Policy:

Untill May 31st: 50% of penalties

After June 1st: 100% of penalties

#### 14.5 Meals at the Venue

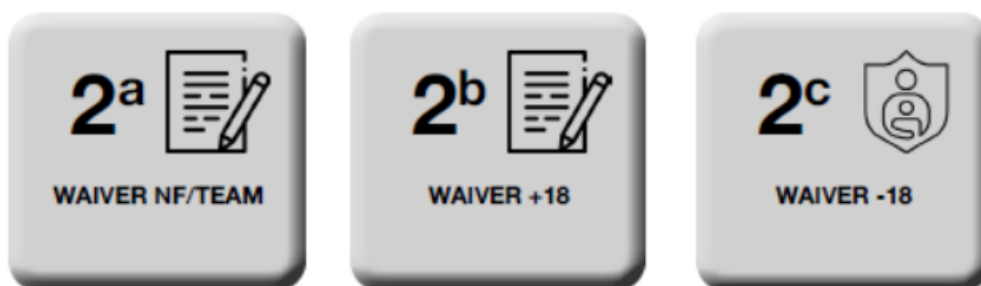
Food stands will be set up within or in front of the sports venue for participants who want to purchase a meal. Preorders and reservations are unnecessary, and payments will be made directly on site.

## 15. WKF COVID PROTOCOL

The relevant WKF Covid Protocol will be included in the second edition of the bulletin, due to the uncertain evolution of COVID 19 and, therefore, the relevant regulations at that time.

## 16. REQUIRED DOCUMENTS

### MANDATORY DOCUMENTS TO BE SUBMITTED AT THE OFFICIAL ACCREDITATION



On registration day all participants must submit the 2 following documents (I, II) Printed:

- I) Proof of COVID Status (only 1 of the following per person)
  - a. A Negative COVID-19 RT-PCR Test
    - i. Result issued at most 72 hours before the onsite registration in English. No antigen tests will be accepted.
  - b. A COVID-19 Vaccination Certificate\*
    - i. showing that they were fully vaccinated at least weeks before the day of registration.
  - c. A COVID-19 Recover Official Certificate\*
    - i. They must have tested positive at least 2 weeks and at most 6 months (180 days) before registration day.
- \*Specification in WKF Covid Protocol
- II) Waiver of Liability Form (Only 1 of the following per person)
  - a. NF/Team Representative & Team List
  - b. Individual +18 years old
  - c. Individual - 18 years old (Parental Consent required)

• The NF/Team Representative takes full responsibility for the validity of all signatures and information provided.

## 16.1 Restrictions on entering to CROATIA

Detailed information regarding the entrance of foreign citizens in Croatia:

<https://mup.gov.hr/uzg-covid/english/286212>

## 17. VISA REQUIREMENTS

Due to regulations of the Ministry of Foreign and European Affairs of the Republic of Croatia, laws of the Republic of Croatia, and guarantees Croatian Karate Union needs to provide for each person that is entering in Croatia with a visa, Croatian Karate Union will issue an invitation letter for visa purposes only to the delegations that have registered their participants through online registration system and booked the official accommodation through our partner Uniline Travel Agency.

Once you have completed your online registration and arranged accommodation through Uniline, please contact the Croatian Karate Union Secretariat Office by email address: [office@karate.hr](mailto:office@karate.hr) for further instructions.

Visa regime between the Republic of Croatia and other countries/entities:

<http://www.mvep.hr/en/consular-information/visas/visa-requirements/overview/>

The search engine for diplomatic missions and Consular offices of Croatia:

<http://www.mvep.hr/en/diplomatic-directory/diplomatic-missions-and-consular-offices-of-croatia/>

### INVITATION LETTERS

Email: [office@karate.hr](mailto:office@karate.hr)

## 18. CITY / COUNTRY INFORMATION

### 18.1 About Poreč



The City of Poreč is located on the Istrian peninsula's western coast, in Istria County, Republic of Croatia. Today's favorite tourist destination of many Croatians and Europeans is also known as a city with a thousand-year history. It had been inhabited even in the Neolithic, and the present structure is due to Romans who formed the City two thousand years ago.

At first, the City was the Roman castrum, constructed 200 years before Christ on the small peninsula, which, up until today, stayed the old town's core. The old town Poreč conserved the old street layout, so the main streets of Decumanus and Cardo Maximus are still in their original ancient form. Although the oldest fortifications have not been preserved, the City claims two medieval fortresses on the peninsula's eastern and northern side and many other significant monuments. The most notable landmark is the 6th-century Euphrasian Basilica, a real architectural treasure, which UNESCO protected in 1997 as a World Heritage Site. Moreover, in Poreč you can also find remains of the Roman forum (Marafor) with Capitoline and Neptune Temple and the Romanesque House nearby, the Church of St. Francis, a dozen gothic palaces, a tower at the entrance to the old part of town, baroque palaces, and the baroque Church of St. Mary of the Angels.

Today, the wider Poreč area has approximately 17000 inhabitants, and its municipal area covers 142 square kilometers with 37 kilometers long shoreline. Mediterranean surroundings, a gentle climate, fertile land, and lush vegetation have made Poreč unique and one of the most visited tourist destinations in Croatia. In Poreč, you can choose between as many as 21 Blue Flag beaches that guarantee a clean sea whose quality has been regularly measured and monitored for more than 25 years. Also, of many Poreč's beauties, we must highlight the Lim Bay, ideal for everyone fond of walking, biking, or hiking. The 11-kilometer-long Lim Bay is known for fish and shellfish farming, and if you decide to take a boat ride, dolphins might wish you a warm welcome to our host city.

Last but not least, years of experience in competitions and tournaments, coupled with constant investment in equipping sports facilities, have resulted in Poreč being granted

the title The City of Sports. Except for its extensive sports infrastructure, Poreč boasts 34 sports clubs and an estimated 2500 active athletes of all ages.

## 18.2 How to get to Poreč

The City of Poreč has a favorable geographical and traffic position, making it easily accessible from all European countries. No matter which mode of transport you prefer, you will find an acceptable solution. As mentioned, Poreč is located on the western coast of the Istrian peninsula, relatively close to the Slovenian border, making it easily reachable even from other countries such as Italy, Austria, and of course, Slovenia. Further bellow you can find valuable inputs if you decide traveling by plane or by bus, but even if you are considering a car, we can guarantee that it is a very convenient choice to reach Istria. Roads in Istria are excellent. The highway, known as Istrian Ypsilon, is a modern and fast road that connects Istria with both the Italian and Slovenian border and Rijeka (Croatia) to the southeast.

### Flight

There are several options if you decide to fly. The closest airport to Poreč is Pula Airport. It is a small and seasonal airport, with a couple of low-cost airlines (Germanwings, Jet2, Norwegian, Ryanair, Vueling) that connects Pula with a dozen European cities. You can fly to Pula Airport from Berlin, Frankfurt, Hamburg, Koeln, Bruxelles, Oslo, Stockholm, Helsinki, Rome, London, Leeds, Manchester. Most flights operate from May to October. The distance from Pula airport to Poreč is 57 km, which is approximately 40 minutes by car.

There are also other airports that you can consider: Zagreb Airport (Croatia) is 249 km away, which evens approximately three hours by car. The second option is Slovenian Ljubljana Airport, less than 200 km away, equal to two and a half hours car ride. Finally, there are two Italian airports close to Poreč - Venice Airport that is 249 km away and two and a half hours by car, and Trieste Airport 130 km away, which implies 1 hour and 45 minutes car ride.

AIRPORT	COUNTRY	DISTANCE	CAR RIDE
Pula Airport	Croatia	57 km	40 min
Zagreb Airport	Croatia	249 km	2 h and 50 min
Trieste Airport	Italy	130 km	1h 45 min
Venice Airport	Italy	236 km	2 h and 40 min
Ljubljana Airport	Slovenia	193 km	2 h and 30 min

## Bus

Poreč is also easily reachable by bus. There are regular buses daily from all major cities in Croatia, wherever you might find yourself on your way to Poreč - Zagreb, Pula, or Rijeka. It will take roughly 4 hours bus ride from the capital (Zagreb), and one and a half hours if your starting points are Pula or Rijeka. You can purchase your bus tickets online, at the bus stations, and often even on the bus from the driver.

BUS STATION	DISTANCE	BUS RIDE
Zagreb	249 km	approx. 4h
Pula	52 km	approx. 1h and 30 min
Rijeka	89 km	approx. 1h and 30 min

## 18.3 Practical Information

**Opening times:** Mostly all shops, stores, and pharmacies in Croatia are opened from 8 a.m. to 8 p.m. Some supermarkets, bakeries, and kiosks are likely to be opened from 7 a.m. and closed at 9 p.m. or even 10 p.m.

**How to pay:** It is possible to pay both in cash or with a credit card in most stores and shops. In the case of paying with a credit card, it is recommended to have an identification document by your side. However, if you are buying some goods at the market or stands, it is advisable to have cash.

**Currency:** Croatian currency is Croatian kuna (HRK) or simply kuna (kn).

**Electricity:** Electrical supply is 230V, 50Hz AC. Croatia uses the standard European plugs.

**Language:** The official language in Croatia is Croatian. However, most people speak at least basic if not advanced English, and many locals in Poreč speak Italian.

**Time:** Croatian time is in the Central European Time Zone (CET). CET is one hour ahead of Greenwich Mean Time (GMT+1). Like in most European countries, Summer Time is observed in Croatia Time, where the time is shifted forward by one hour; 2 hours ahead of Greenwich Mean Time (GMT+2).



#### 18.4 Side Events

WKF YOUTH CAMP, U12&U21 CUP

Held in the same location, both hotels and sports venues. Please see more at:

[https://www.sportdata.org/wkf/set-online/veranstaltung\\_info\\_main.php?active\\_menu=calendar&vernrr=476](https://www.sportdata.org/wkf/set-online/veranstaltung_info_main.php?active_menu=calendar&vernrr=476)

Registrations: June 25-26

WKF Youth Camp: June 27-29

WKF U12&u21 Cup: June 29-30

#### 19. MISCELLANEOUS

For any additional questions, please contact the LOC at [office@karate.hr](mailto:office@karate.hr)

#### 20. OMISSIONS

As regards that the specific items are not expressly foreseen in the present bulletin reference is to be made to the general rules and guidelines contained in WKF Regulations.

